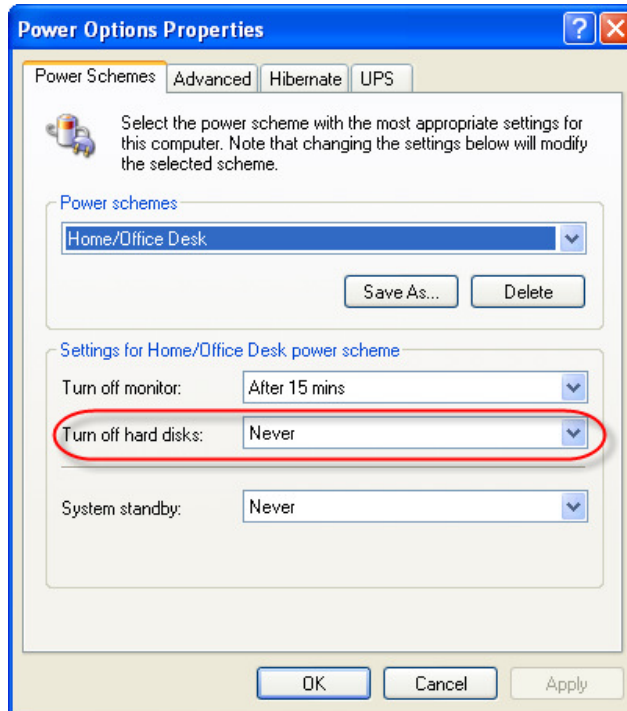


Losing connection / Workflows closing unexpectedly

- Does the loss of connection occur after the computer has been idle?
 - Some Windows machines incorporate power-saving features that will cause computers to turn off the monitor, disk drives, and/or networking adapters while the computer is idle for an extended period of time.
 - Set the "Turn off hard disks:" to "Never."



- For the network connection, uncheck the "Allow the computer to turn off this device to save power" feature (accessed through the device manager).

